

Lime-Lite™ ENHANCED

BIOACTIVE LIGHT CURE CAVITY LINER

4.7
★★★★★
RATING



The Most Trusted Base/liner for Everyday Protection

- Easy application, moisture-friendly
- Strong pulpal protection, minimal post-op sensitivity
- Bioactive defense against secondary caries*

20
YEARS
OF CLINICAL SUCCESS

*Lime-Lite Enhanced physically seals the margin of the material-tooth interface through apatite crystal formation, thus protecting against microleakage—the leading cause of secondary caries and recurrent decay.



PULPDENT™ Your Premier Partner in Caries Management · Pulpdent.com

PULPDENT

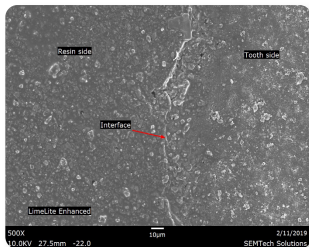
Lime-Lite™ ENHANCED

Bioactive Patient Treatment

Images courtesy Dr. C.H. Pameijer



SEM image of Lime-Lite Enhanced shows marginal integration and bioactive apatite crystal formations



XF-LLE-CARD REV: 01/2024

POWERED BY
**PATENTED
TECHNOLOGY**



CRYSTA™

MCP TECHNOLOGY

U.S. PATENT NO 11,116,701 B2

Stabilized calcium and phosphate supports the natural remineralization process



ION-X™

Ionic matrix supports ion release and recharge, plus bioactive protection



MODULUS™

Patented elastomeric monomer imparts strength and resilience



WetBond™

Moisture-friendly chemistry